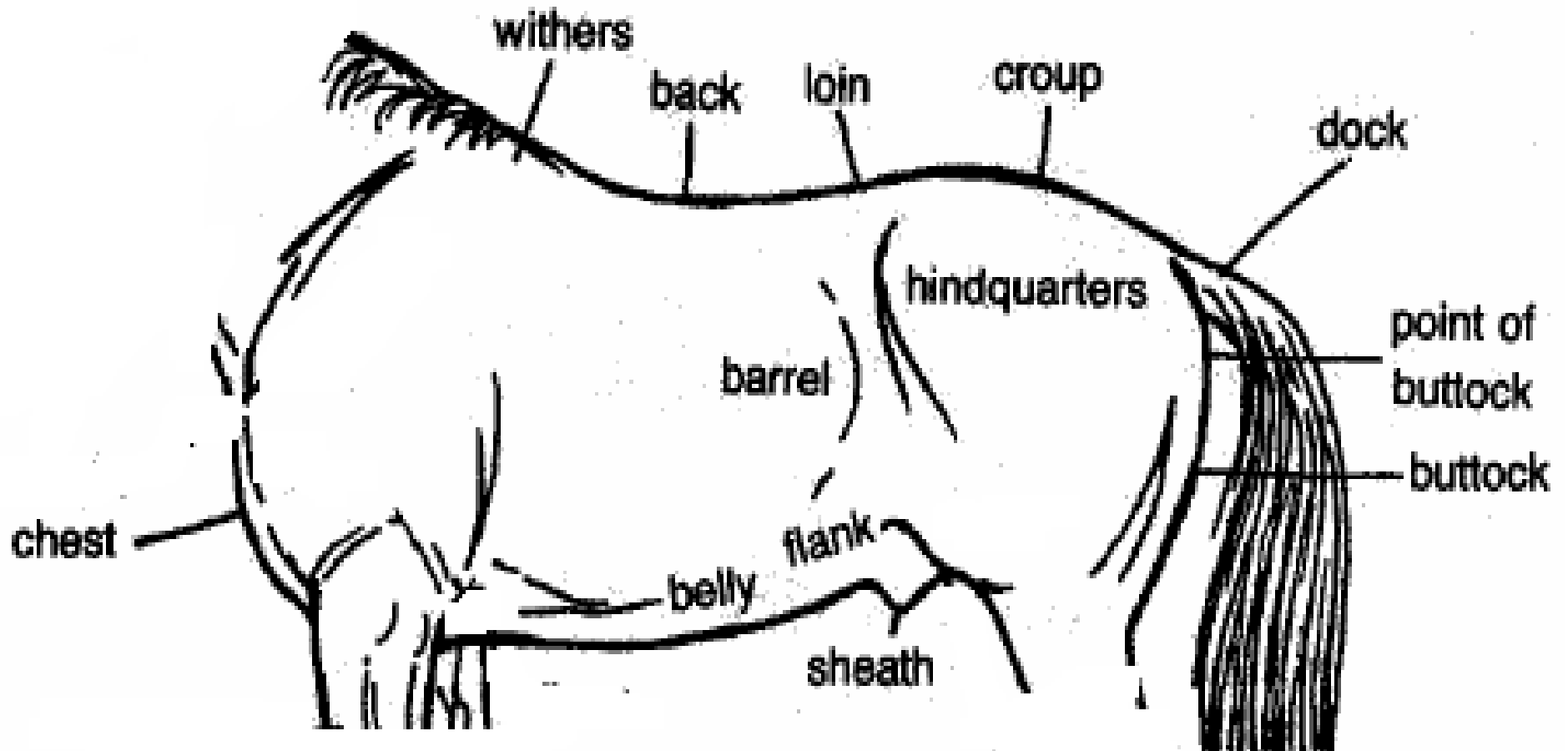


Parts of the Body

Date: _____



Horse Parts Word Bank

arm	dock	loin
back	elbow	mane
barrel	face	muzzle
belly	fetlock joint (fore)	pastern (fore)
buttock	fetlock joint (hind)	pastern (hind)
cannon bone (fore)	flank	point of buttock
cannon bone (hind)	forearm	point of shoulder
cheek	forelock	poll
chest	gaskin	sheath
chestnut	hindquarters	shoulder
chin groove	hock	stifle
coronary band (fore)	hoof (fore)	tendons
coronary band (hind)	hoof (hind)	throttle
crest	jaw	withers
croup	knee	